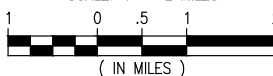


7/20/2023 5:16 PM



VICINITY MAP

SCALE: 1" = 2 MILES



JEFFERSON COUNTY
LAT. 29° 49' 22" N
LONG. 93° 57' 19" W

NOTE:

1. EXISTING USACE PERMIT SWG-2011-01123.
2. ALL ELEVATIONS REFER TO MEAN LOWER LOW WATER (MLLW) UNLESS NOTED OTHERWISE.
3. MEAN HIGH WATER (MHW) AND MEAN HIGHER HIGH WATER (MHHW) ELEVATIONS ARE FROM NOAA PORT ARTHUR, TX GAGE.
MHW = (+)0.99' MLLW
MHHW = (+)1.04' MLLW

CHRISTOPHER S. GUY, P.E.
TX PE #116477

PRELIMINARY - FOR PERMITTING PURPOSES ONLY, NOT FOR CONSTRUCTION

REV
A



LANIER & ASSOCIATES
CONSULTING ENGINEERS
INCORPORATED

LA: EF-1120 TX: F-2981
NEW ORLEANS • BEAUMONT • CORPUS CHRISTI • HOUSTON

PI DOCK FACILITIES LLC
PORT ARTHUR TEXAS

PLEASURE ISLAND DOCK FACILITY
VICINITY MAP

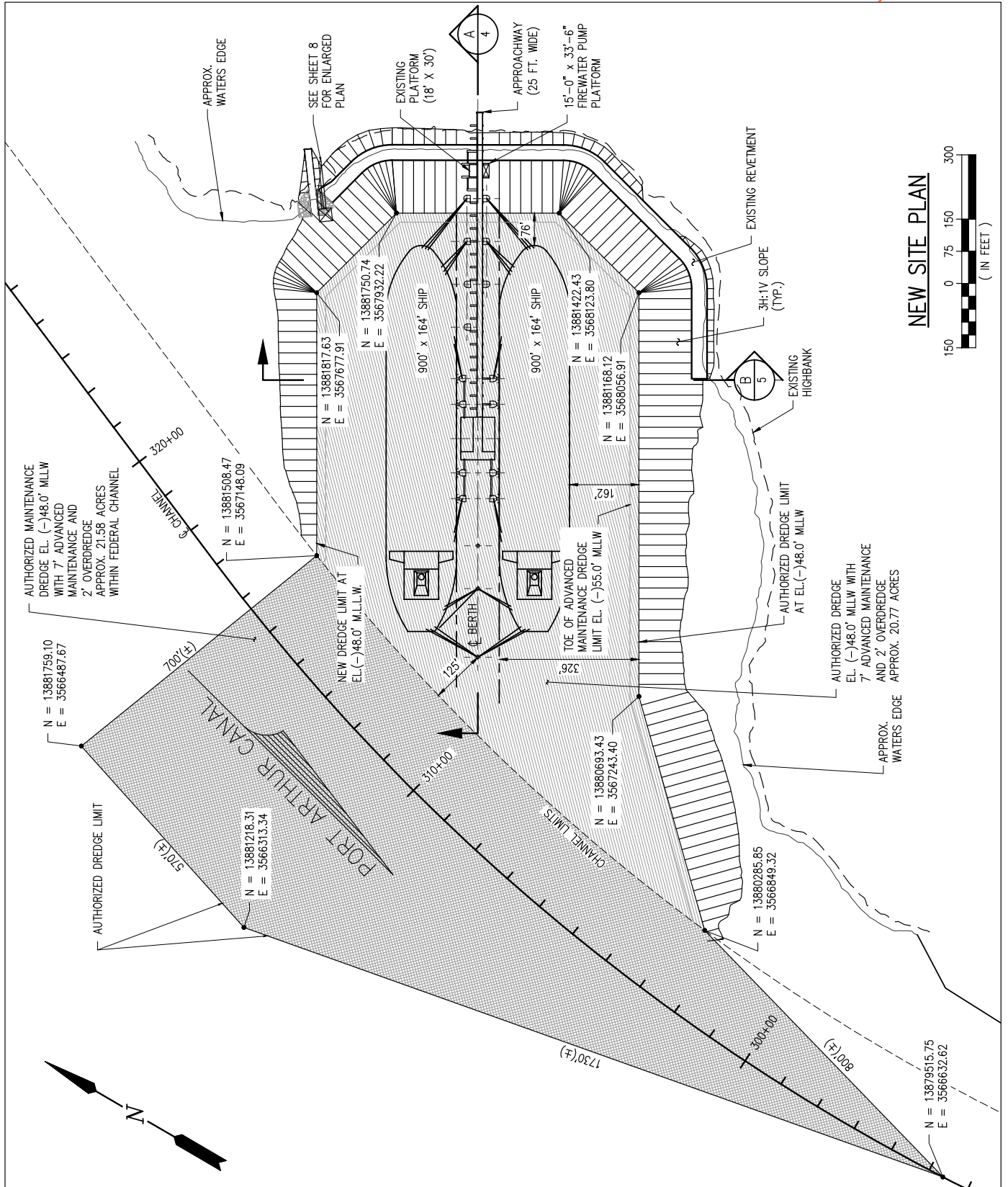
DATE APR. '23
DESIGN CSG
DRAWN ADG
CHECK RRM
JOB NO 12473
SHEET No.

1 OF 10

J:\120005\12473 PI DOC PERMIT MODIFICATION\DRAWINGS\PERMIT\12473-P1.DWG

7/20/2023 5:16 PM

J:\120005\12473 PI DOCK PERMIT MODIFICATION\DRAWINGS\PERMIT\12473-P2.DWG



CHRISTOPHER S. GUY, P.E.
TX PE #16477

PRELIMINARY - FOR PERMITTING PURPOSES ONLY, NOT FOR CONSTRUCTION

REV
B



LANIER & ASSOCIATES
CONSULTING ENGINEERS
INCORPORATED

LA: EF-1120 TX: F-2981
NEW ORLEANS • BEAUMONT • CORPUS CHRISTI • HOUSTON

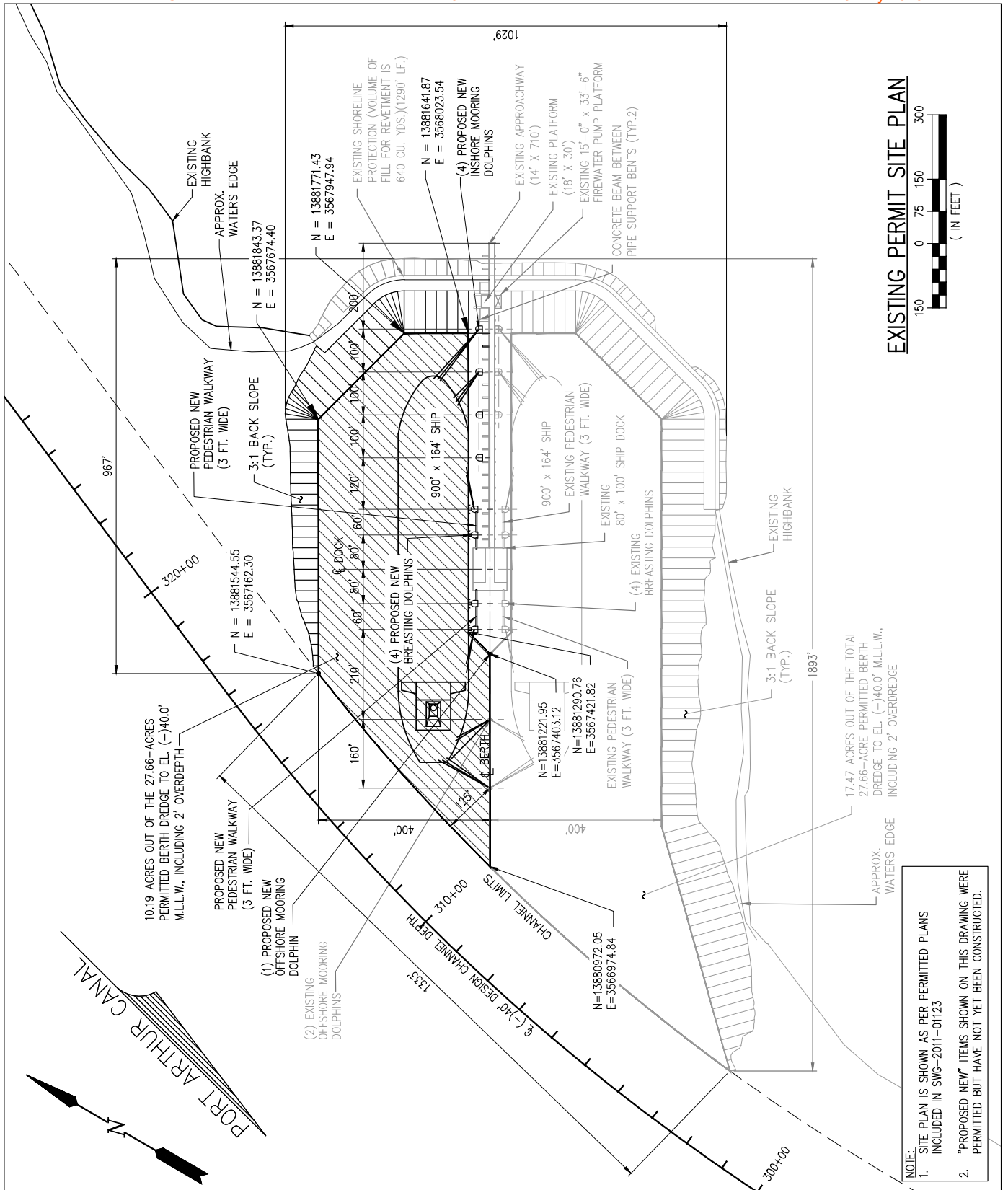
PORT ARTHUR PI DOCK FACILITIES LLC TEXAS

PLEASURE ISLAND DOCK FACILITY
NEW SITE PLAN

DATE APR. '23
DESIGN CSG
DRAWN PJC
CHECK RRM
JOB NO 12473
SHEET No.
2 OF 10

7/20/2023 5:16 PM

J:\120005\12473 PI DOC PERMIT MODIFICATION\DRAWINGS\PERMIT\12473-P3.DWG



CHRISTOPHER S. GUY, P.E.
TX PE #116477

PRELIMINARY - FOR PERMITTING PURPOSES ONLY, NOT FOR CONSTRUCTION

REV
A



LANIER & ASSOCIATES
CONSULTING ENGINEERS
INCORPORATED

LA: EF-1120 TX: F-2981
NEW ORLEANS • BEAUMONT • CORPUS CHRISTI • HOUSTON

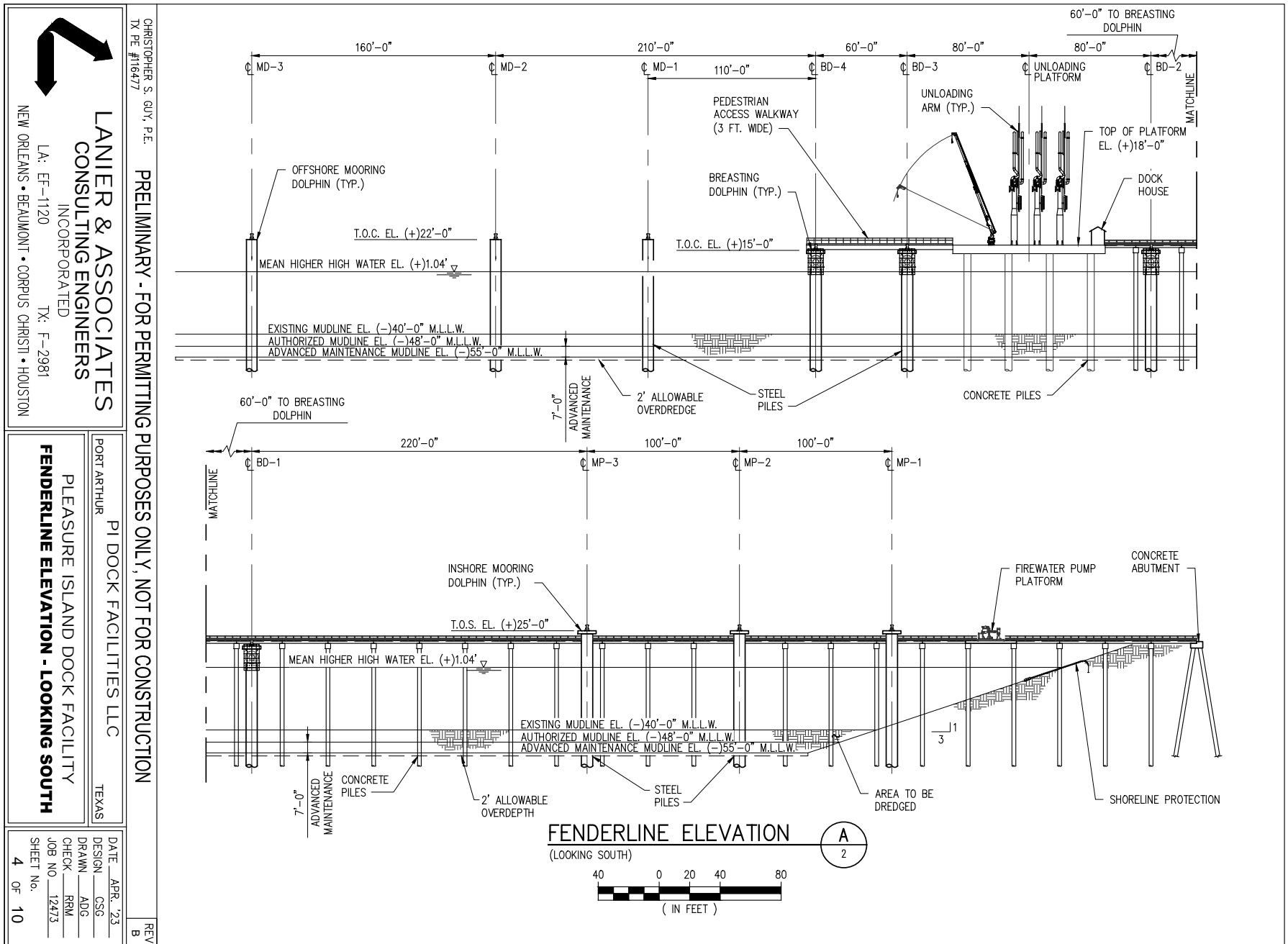
PI DOCK FACILITIES LLC
PORT ARTHUR TEXAS

PLEASURE ISLAND DOCK FACILITY
EXISTING PERMIT SITE PLAN

DATE APR. '23
DESIGN CSG
DRAWN PJC
CHECK RRM
JOB NO. 12473
SHEET No.
3 OF 10

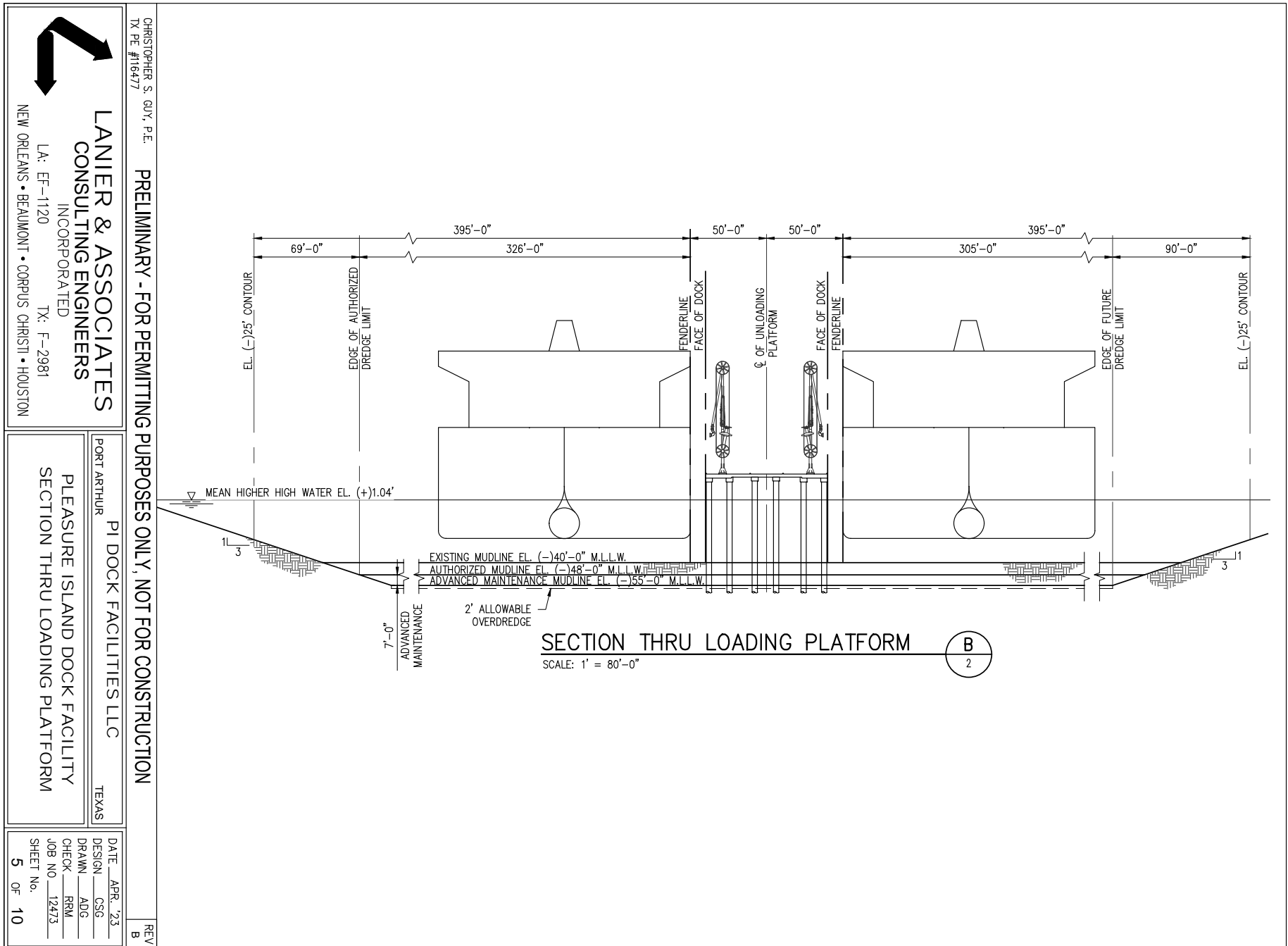
J:\120005\12473 PI DOCK PERMIT MODIFICAT\DRAWINGS\PERMIT\12473-P4.DWG

7/20/2023 5:16 PM

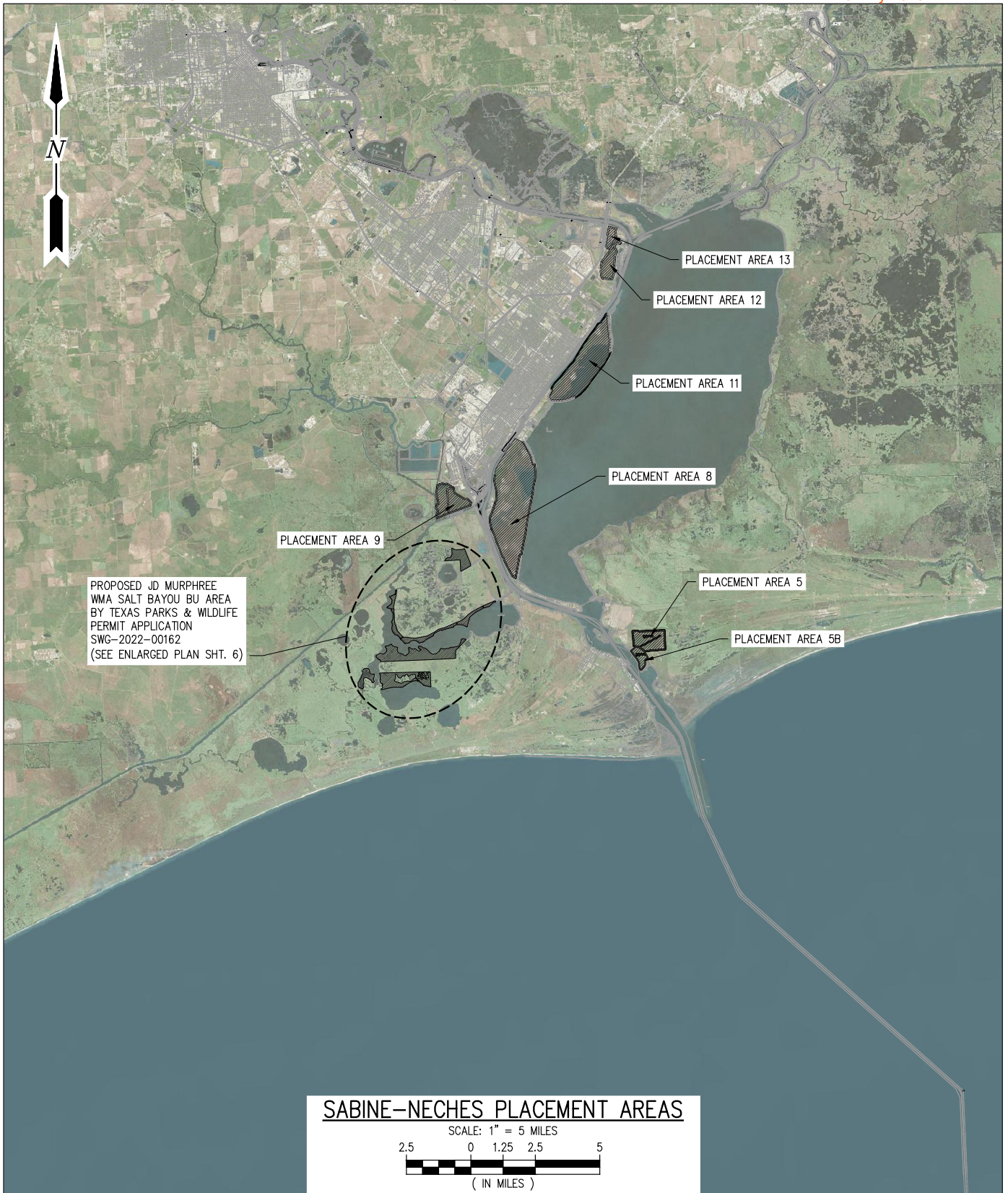


J:\2000S\12473 PI DOC PERMIT MODIFICAT\DRAWINGS\PERMIT\12473-P5.DWG

7/20/2023 5:16 PM



7/20/2023 5:17 PM



SABINE-NECHES PLACEMENT AREAS

SCALE: 1" = 5 MILES
2.5 0 1.25 2.5 5
(IN MILES)

CHRISTOPHER S. GUY, P.E.
TX PE #116477

PRELIMINARY - FOR PERMITTING PURPOSES ONLY, NOT FOR CONSTRUCTION

REV
A



LANIER & ASSOCIATES
CONSULTING ENGINEERS
INCORPORATED

LA: EF-1120 TX: F-2981
NEW ORLEANS • BEAUMONT • CORPUS CHRISTI • HOUSTON

PI DOCK FACILITIES LLC
PORT ARTHUR TEXAS

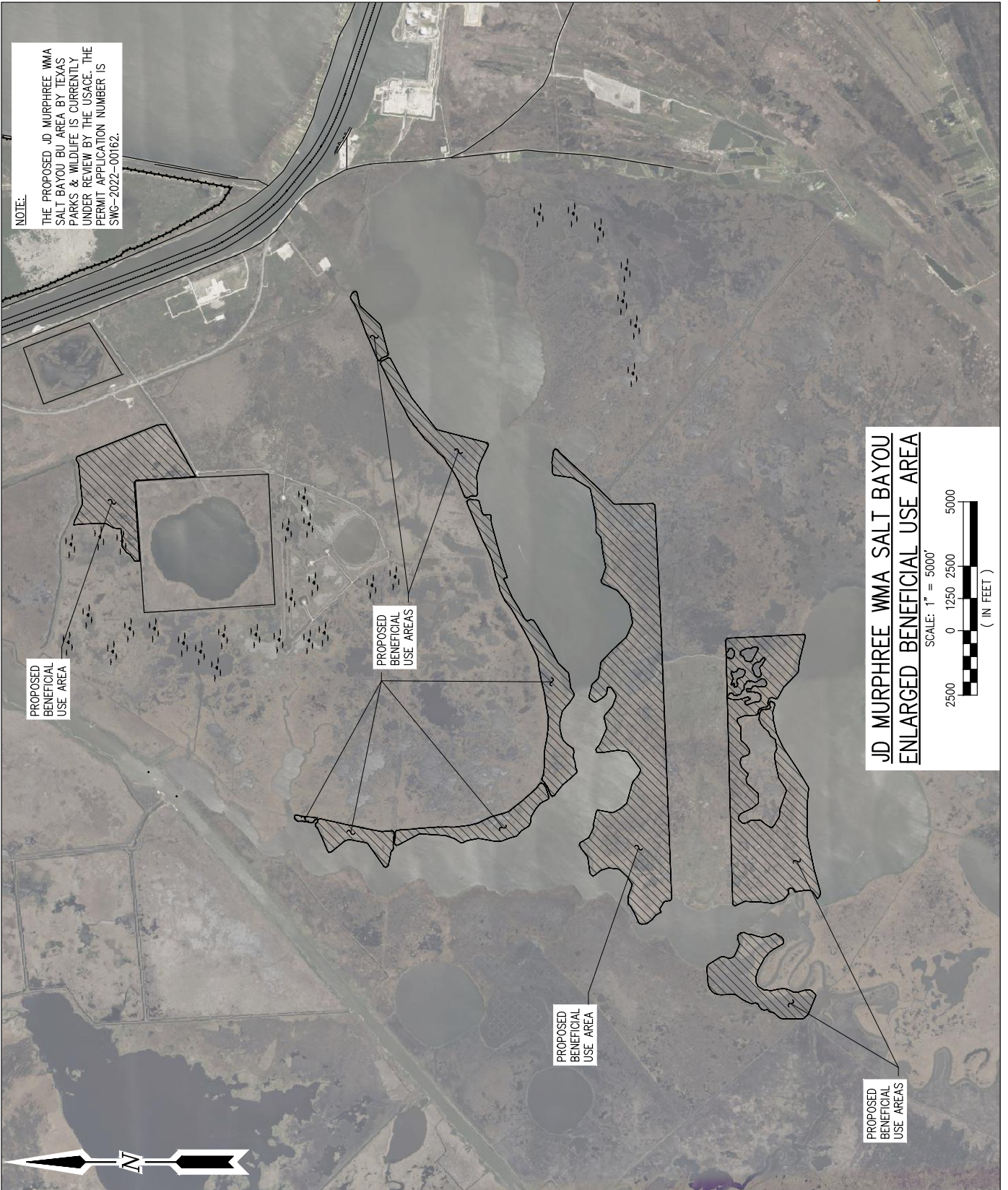
PLEASURE ISLAND DOCK FACILITY
SABINE-NECHES PLACEMENT AREAS

DATE APR. '23
DESIGN CSG
DRAWN ADG
CHECK RRM
JOB NO 12473
SHEET No.
6 OF 10

J:\120005\12473 PI DOCK PERMIT MODIFICATION\DRAWINGS\PERMIT\12473-P6.DWG

7/20/2023 5:17 PM

NOTE:
THE PROPOSED JD MURPHREE WMA
SALT BAYOU BU AREA BY TEXAS
PARKS & WILDLIFE IS CURRENTLY
UNDER REVIEW BY THE USACE. THE
PERMIT APPLICATION NUMBER IS
SWG-2022-00162.



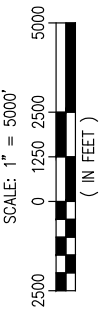
PROPOSED
BENEFICIAL
USE AREA

PROPOSED
BENEFICIAL
USE AREAS

PROPOSED
BENEFICIAL
USE AREA

PROPOSED
BENEFICIAL
USE AREAS

JD MURPHREE WMA SALT BAYOU
ENLARGED BENEFICIAL USE AREA



CHRISTOPHER S. GUY, P.E.
TX PE #116477

PRELIMINARY - FOR PERMITTING PURPOSES ONLY, NOT FOR CONSTRUCTION

REV
A



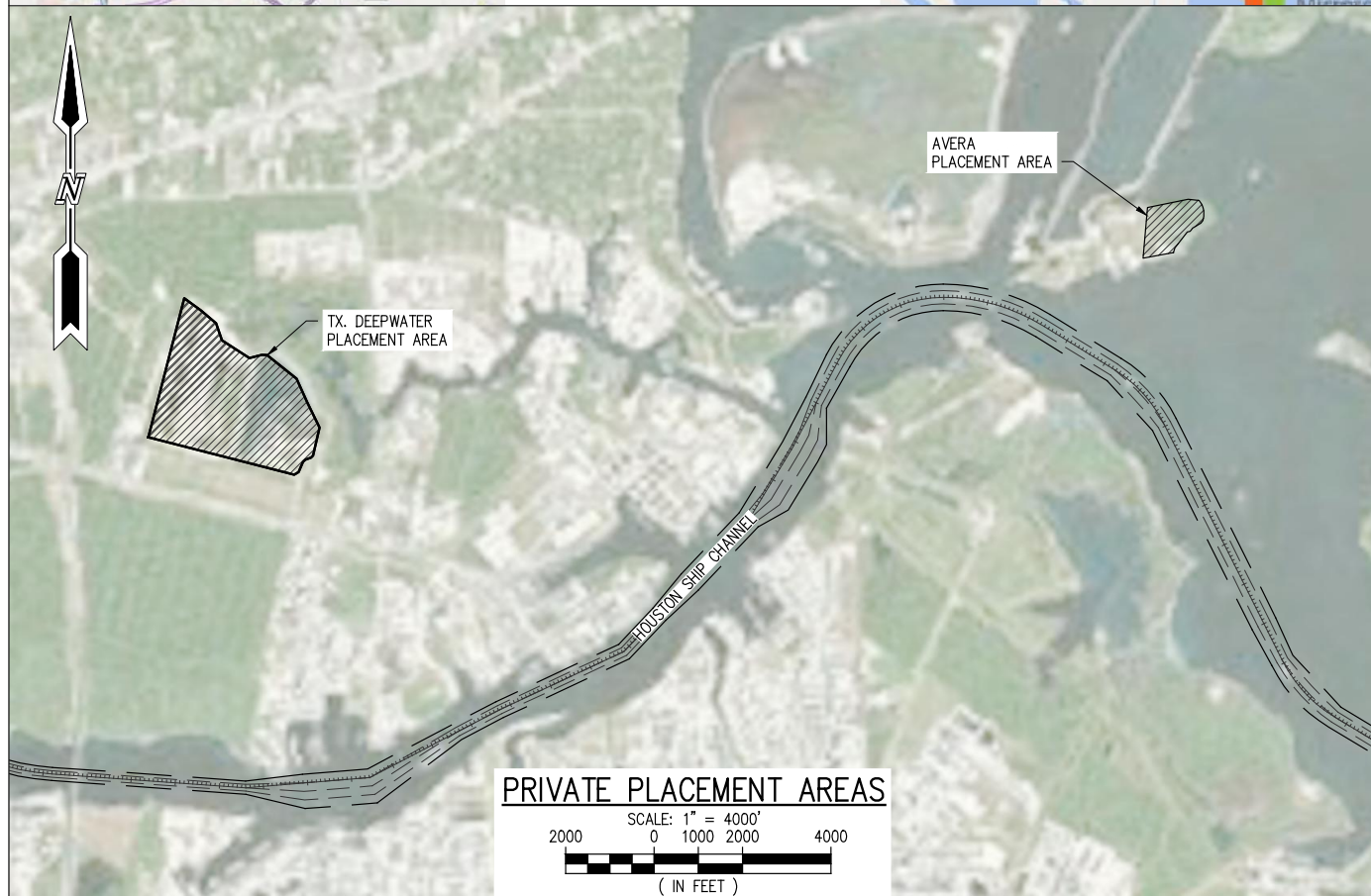
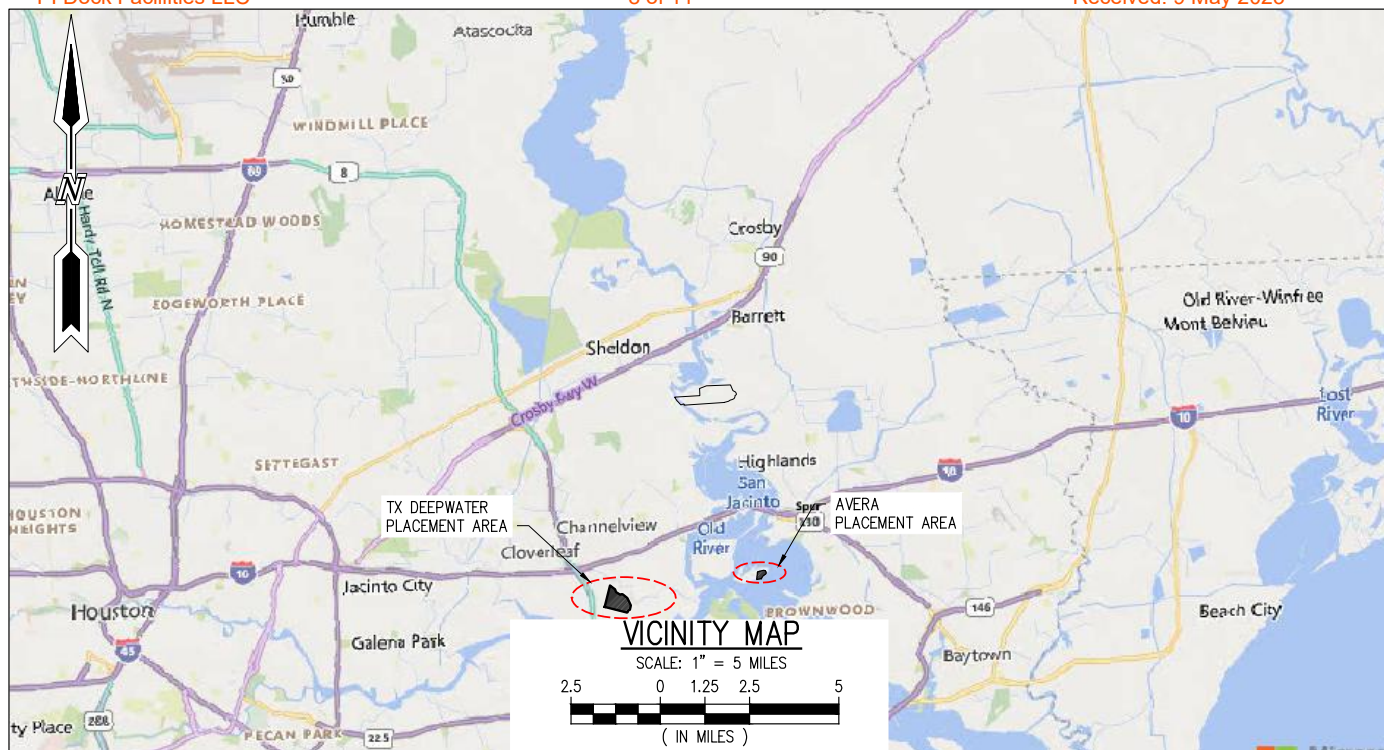
LANIER & ASSOCIATES
CONSULTING ENGINEERS
INCORPORATED
LA: EF-1120 TX: F-2981
NEW ORLEANS • BEAUMONT • CORPUS CHRISTI • HOUSTON

PI DOCK FACILITIES LLC
PORT ARTHUR TEXAS
PLEASURE ISLAND DOCK FACILITY
JD MURPHREE BENEFICIAL USE AREA

DATE	APR. '23
DESIGN	CSG
DRAWN	ADG
CHECK	RRM
JOB NO	12473
SHEET No.	7 OF 10

J:\120005\12473 PI DOCK PERMIT MODIFICATION\DRAWINGS\PERMIT\12473-P7.DWG

7/20/2023 5:17 PM



CHRISTOPHER S. GUY, P.E.
TX PE #116477

PRELIMINARY - FOR PERMITTING PURPOSES ONLY, NOT FOR CONSTRUCTION

REV
B



LANIER & ASSOCIATES
CONSULTING ENGINEERS
INCORPORATED

LA: EF-1120 TX: F-2981
NEW ORLEANS • BEAUMONT • CORPUS CHRISTI • HOUSTON

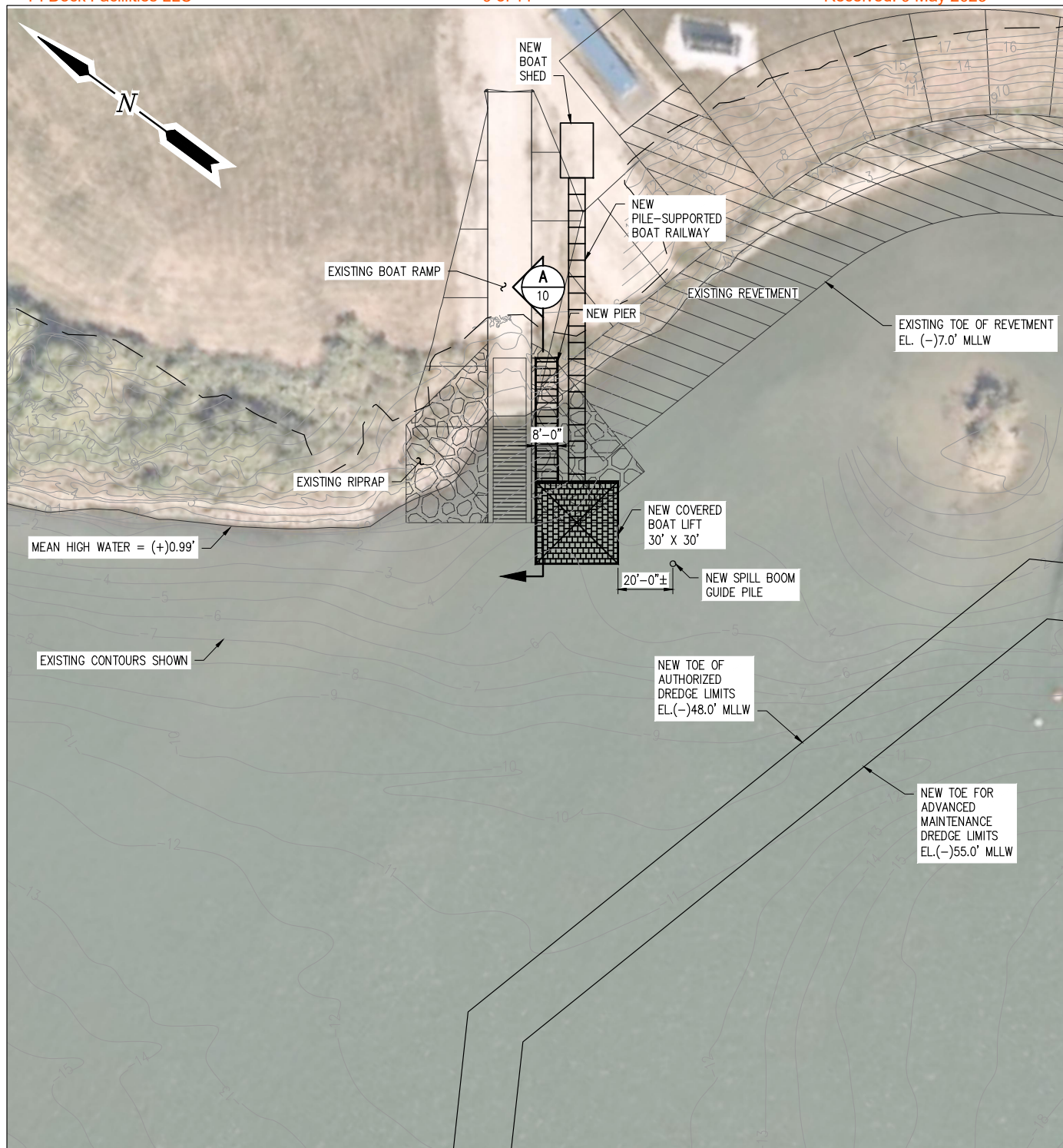
PI DOCK FACILITIES LLC
PORT ARTHUR TEXAS

PLEASURE ISLAND DOCK FACILITY
PRIVATE PLACEMENT AREAS

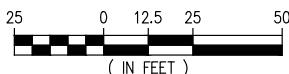
DATE APR. '23
DESIGN CSG
DRAWN ADG
CHECK RRM
JOB NO 12473
SHEET No.
8 OF 10

J:\120005\12473 PI DOCK PERMIT MODIFICATIONS\DRAWINGS\PERMIT\12473-P8.DWG

7/20/2023 5:17 PM



NEW PIER AND BOAT LIFT



CHRISTOPHER S. GUY, P.E.
TX PE #116477

PRELIMINARY - FOR PERMITTING PURPOSES ONLY, NOT FOR CONSTRUCTION

REV
B



LANIER & ASSOCIATES
CONSULTING ENGINEERS
INCORPORATED

LA: EF-1120 TX: F-2981
NEW ORLEANS • BEAUMONT • CORPUS CHRISTI • HOUSTON

PI DOCK FACILITIES LLC
PORT ARTHUR TEXAS

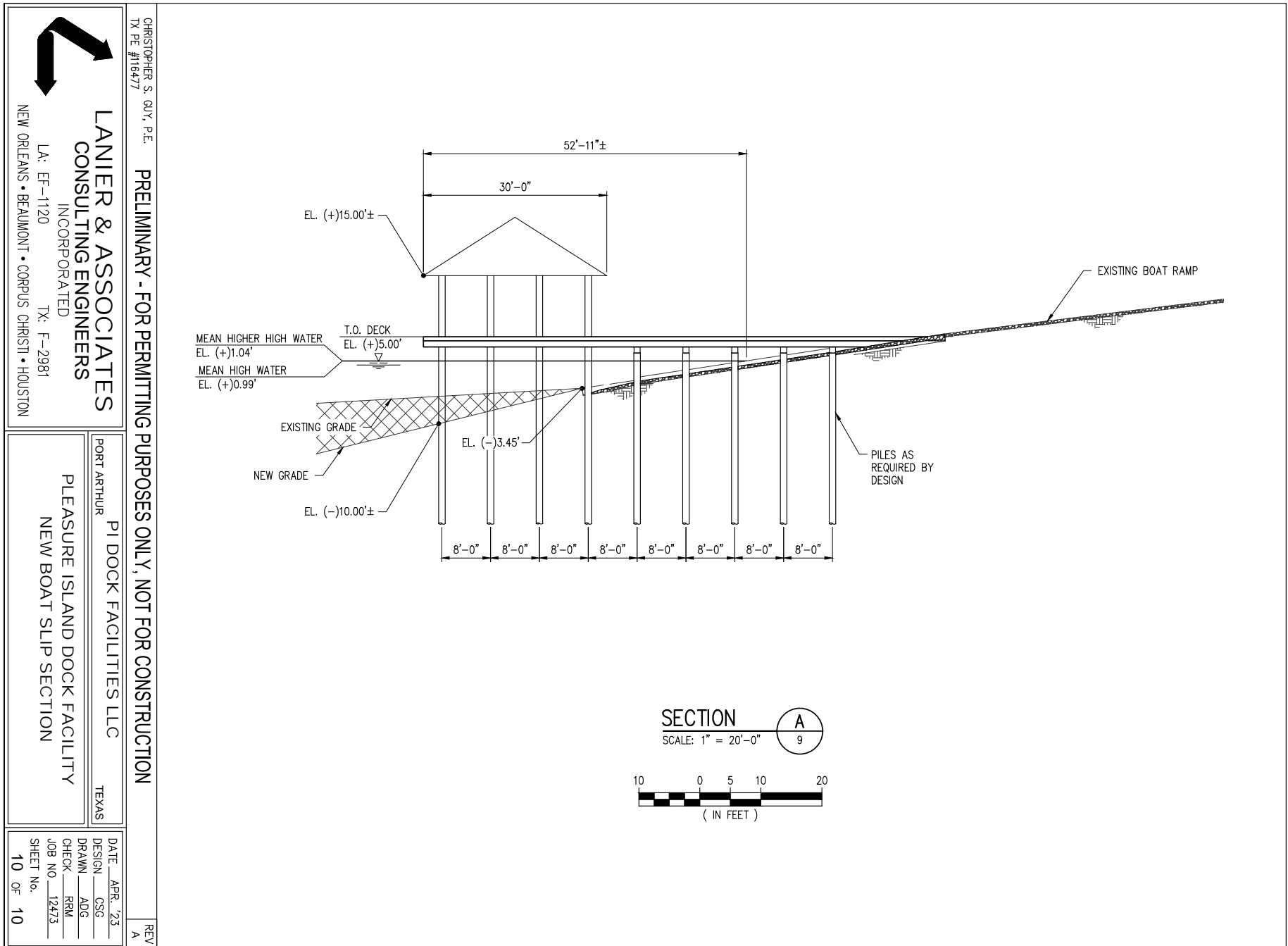
PLEASURE ISLAND DOCK FACILITY
NEW PIER AND BOAT LIFT

DATE APR. '23
DESIGN CSG
DRAWN ADG
CHECK RRM
JOB NO 12473
SHEET No.
9 OF 10

J:\120005\12473 PI DOCK PERMIT MODIFICATION\DRAWINGS\PERMIT\12473-P9.DWG

J:\12000S\12473 PI DOC PERMIT MODIFICAT\DRAWINGS\PERMIT\12473-P10.DWG

7/20/2023 5:18 PM



J:\2000S\12473 PI DOC PERMIT MODIFICAT\DRAWINGS\PERMIT\12473-P10.DWG

5/4/2023 4:46 PM

